



SEPTEMBER 2015

GARDEN THYMES

MIDDLEBURY GARDEN CLUB NEWSLETTER

www.middleburygardenclub.org

NEXT MEETING

The event chair is **Ashley Dewey**.
Call **Ashley** to reserve your spot (max.20)
475-3075

WEDNESDAY, September 9
SHELBURNE FARM & GDN TOUR,
1611 Harbor Road, Shelburne

Those attending will park at the Welcome Center and purchase a ticket for \$18 for the tours and tea. Your own lunch may be consumed or you may park behind the Farm Burn and purchase lunch at the Farm Cart (can be slow). Tell the guard at the gate that you are with our club.

At 2PM we will assemble at the Welcome Center to meet our guide. We will tour the market garden and then take a few cars on to the Inn where Birgit Deeds will guide us through the formal garden. At 3:30PM or so we will have tea and sandwiches at The Inn at Shelburne Farms.

Please see your yearbook for more information.

LIBRARY FLOWERS

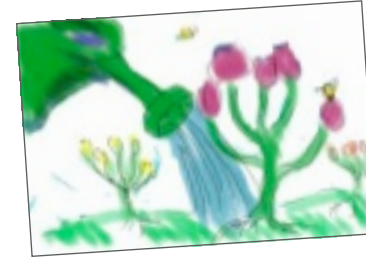


August - *Lorraine Abramson*

CAPSULE CALENDAR

- Sept. 8 - Sheldon "Garden Party" 9AM
- WEDNESDAY** Sept. 9 - Shelburne Farms
- Oct. 12 - Deliver Donations to Gale Burns'
- Oct. 13 - Creations and Donations
- Nov. 10 - Medicinal Shrubs & Vines
- Nov. 17 - Decorate Sheldon Museum
- Nov. 24 - Snowflake Workshop

Know How to Weed and Water?



The Sheldon Museum needs two people to

deadhead, weed and water **ONCE** during a week of September 21. You choose the day and time - contact **Shari Johnson**, adinsgj@aol.com, 462-3366, to fill the maintenance schedule and find out what's needed.

Free at 9am. September 8?

Join **Shari, Pat Morrow** and others at the Sheldon Museum for a fun weeding, watering and deadheading party. Bring your own tools, kneeler, hat, sunscreen, drinking water, etc.



Wendy Parker (Griff)
1360 Kellogg Bay Rd.
Vergennes, VT 05491
wvanroden@aol.com
(610)745-8508

Wendy expressed interest in the Sheldon Museum Garden, the Ilsley Library and Sheldon decorating and in hospitality.

**ADVANCE NOTICE, especially
for newer members:
Creations and Donations**, held on

October 13, is one of the club's two annual fundraisers and we encourage all members to make every effort to attend and to bring a guest and/or prospective member. Suitable items for donation include art work; antiques; re-gifted items; house plants; pottery; fall



arrangements such as dried flowers in containers or in arranged bunches; stationery; food, for example pies, packaged chicken curry, pasta sauces, soups, pickles, jams or chutneys, cakes, cookies, fudge or other candy; jewelry; knitted, quilted, crocheted or

sewn items, and the like. Use your imagination and bring what you would give to a friend.

Here's how it works: You drop off your items at **Gale Burns'** lakeside guest house (down the hill at 457 Cider Mill Road, Cornwall) the day before, 1 - 3, or otherwise make sure they make it there that day, and **Barbara Blodgett** and **Patti Marrinan** price and arrange them invitingly.



On Tuesday we drink wine (or not) and survey the goodies; then, when the word is given, we grab our selections and head for the cashier's table, cash or checkbook in hand. Your included lunch afterwards will be delicious appetizers, soups, breads and desserts, so **please invite your friends and prospective members to join us**.

Questions? Call **Barbara** at 388-8268.

Hospitality: **Mary Ann Castimore, Pat Chase, Peggy Cox, Pat Durfee, Christine Fraioli, Charlotte Furey, Carol Miller, Elaine Mitcham, Pat Morrow** and **Marilyn Needham**.

MINUTES - AUGUST MEETING

Please read. You will be asked to vote on accepting these minutes.

The Middlebury Garden Club met on August 18, 2015 at the Helen Porter Rehabilitation Center. Members brought flowers from their gardens to be arranged in individual small containers for patient's rooms. The business meeting followed and was called to order by **Pat Morrow**, President.

Treasurer **Lorrie Muller** reported that income for 2014 - 2015 exceeded expenses by \$329.69. \$200 has been donated to the Isley Library for plants for their garden.

Pat reported that there are three new members: **Jennifer Vyhnek, Ryan Nevius**, and **Wendy Parker**.

Acknowledgment of their time and effort was made to **Lynne Boie** for her flower arranging workshop, to **Jane Burton** and **Louise Crawford** for arranging a three stop garden tour, to **Ashley Dewey** for organizing the Basin Harbor tour, to **Nancy Merolle** for chairing the Helen Porter meeting, and to everyone involved in Sheldon Museum garden work.

Three upcoming activities were announced. The Honey Dew Homestead tour will take place on August 25, the Shelburne Farm tour on Wednesday, September 9, and Creations and Donations on October 13.



Updated website available September 1: vermontfgcv.com
Password for the

member page is "sugarmaple". New England Region: ngcner.org. National: gardenclub.org

Fall FGCV Meeting will be held October 5th in Randolph. The registration form will be online. Please read online the fall issue of *The Leaf*, found at vermontfgcv.com to find out about the by-law changes and the NGC dues increase in 2016.

Pat discussed the need for dried plant material for decorating the Sheldon Museum. She urged members to start to dry some of the plants they may have in their gardens. A list of suitable plants for drying will be available in the next newsletter [*last page of this newsletter*].

Jane Burton urged members to consider potting divided plants in the fall instead of waiting until spring when they may not have shown much growth. The pots can be placed in a trench in the garden and covered with some mulch to overwinter.

The Arch garden at Porter Hospital is being planted with shrubs and perennials. The club will be donating funds towards the purchase of the plant material.

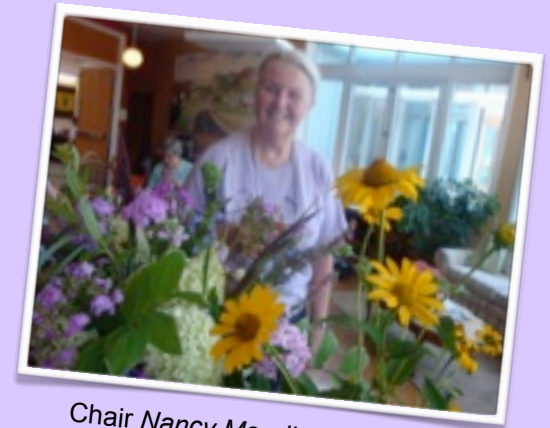
Respectfully submitted,
Pat Durfee, Recording Secretary

Members create mini fresh arrangements at Helen Porter.

Quite a few members braved the outdoor heat to travel to help Nursing Care residents with flower arrangements. Many residents enjoyed making their own arrangements and those who could not participate enjoyed visiting with us. We provided old-fashioned looking jars with lids that opened for the tiny arrangements and made 70 small arrangements for distribution to rooms after our business meeting. At least three arrangements were left for placement around the facility. Thank you to chair **Nancy Merolle**, to our hospitality providers **Carol Kress** and **Helen McFerran**, to **Pat Morrow** for the lovely photos, and to all participants for making this a successful event.



Anneke Oranje



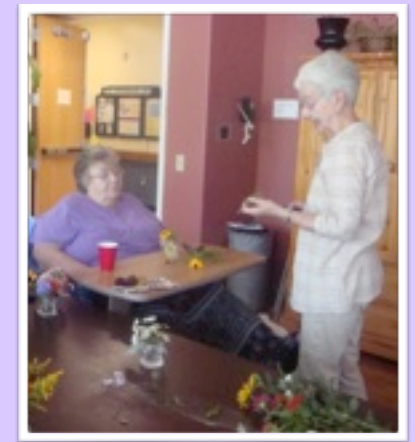
Chair Nancy Merolle



Nancy Merolle and Anne Collins



Jane Burton



Pat Durfee



Ginny Heidke



Ashley Dewey



Pat Morrow

Plant materials for drying:

Pick just BEFORE the peak of
flowering.
Hang in dry, warm, dark space.
Strip leaves from stem.

Flowers:

Statice
Baby's Breath
Artemesia
Achillea (yarrow)
Goldenrod
Gomphrena
Peony (pinks and reds are best)
Roses
Hops
Strawflower
Lavender
Delphinium
Larkspur
Love-in-a-Mist
Celosia
Lamb's Ears (flower stalk)

Pods:

Milkweed
Iris
Baptisia
Poppies
Peony (singles are best)
Sumac
Pine cones

use your imagination!



Fifteen members surmounted geographic and mapping issues to join Markey Read at Honey Dew Homestead in Williston on a beautifully cool morning to learn how to grow and raise half a couple's annual food intake at home. Thank you to chair **Anne Taylor** and to hospitality providers **Louise Crawford and Marilyn Needham**. If only we had half the energy and determination Markey has!